

Rotary Switch Catalogue

MESL's range of waveguide rotary switches provide a low loss, high performance means of switching power between waveguide runs, components or loads in satellite, telecommunication, radar or electronic warfare (EW) applications.

We provide two different ranges of Rotary Switches, covering waveguide sizes WG6 (R14,WR650) through to WG25 (R620,WR15).



Standard Rotary Switch: Table of Designs

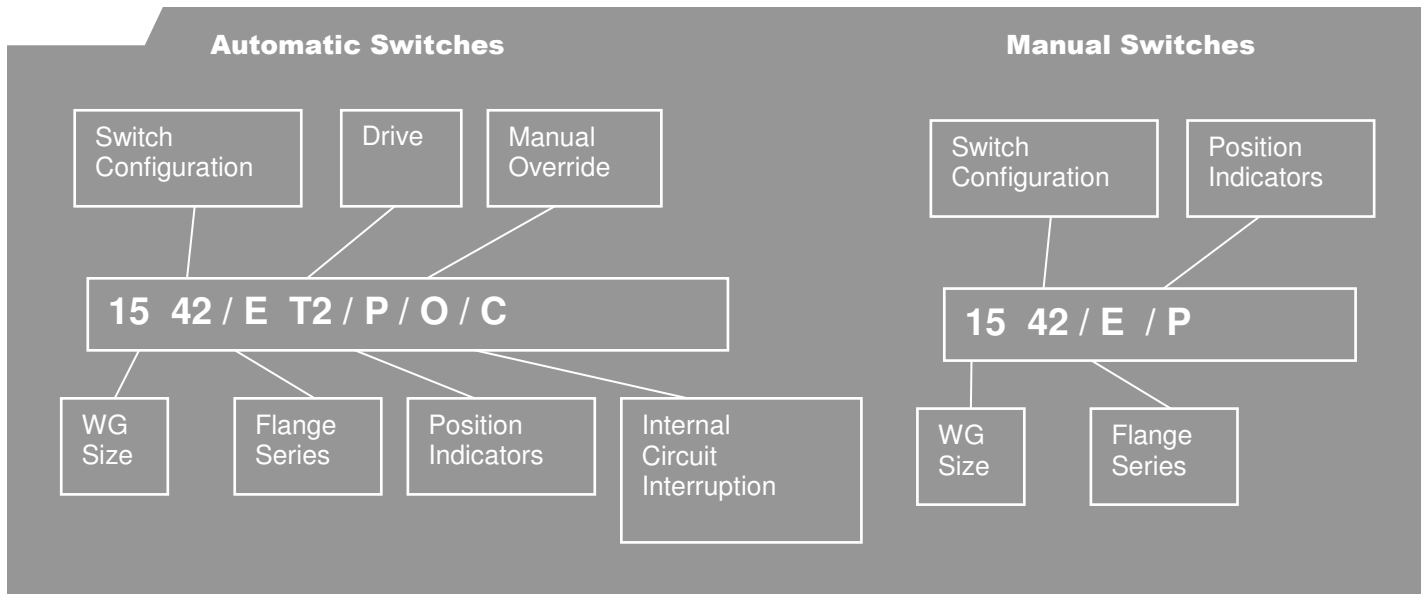
Waveguide	Actuation	Switch Type	Specification
WG6	Latching with keylock	6-42/ET5/P/O	6564
WG6	Manual	6-42/E/P	5804
WG8 / WR430	Latching	8-42/EDS/P/O/C	5718
WG10 / WR284	Latching	10-42/ET1/P/C	6543
WG10 / WR284	Manual	10-42/E/P	5695
WG11A / WR229	Latching	11A-42/NDS/P/O/C	5733
WG12 / WR187	Latching	12-42/ET1/P/C	6534
WG14 / WR137	Latching	14-42/ET2/P/O	6536
WG14 / WR137	Manual	14-42/E/P	5712
WG15 / WR112	Latching	15-42/ET2/P/C	6506
WG15 / WR112	Fail-safe	15-42/EFS/P/C	5782
WG15 / WR112	Manual	15-42/E/P	5814
WG16 / WR90	Latching	16-42/ET1/P/C	6501
WG16 / WR90	Fail-safe	16-42/EFS/P	5792
WG16 / WR90	Manual	16-42/N/P	5142
WG17 / WR75	Latching	17-42/ET1/P	6519
WG17 / WR75	Manual	17-42/E/P	5668
WG18 / WR62	Latching	18-42ET1/P/C	6507
WG18 / WR62	Manual	18-42/N	5166
WG20 / WR42	Latching	20-42/ET1/P/C	6533
WG20 / WR42	Manual	20-42/N	5220
WG22 / WR28	Latching	22-42/ET1/P/C	6565
WG22 / WR28	Fail-safe	22-42/NFS/P	5794
WG22 / WR28	Manual	22-42/E	5802
WG23 / WR22	Latching	23-42/NT2/P/O	6551
WG24 / WR19	Latching	24-42NT1/P/O	6557
WG25 / WR15	Latching	25-32NT1/P	6500

*This publication is issued for outline information purposes only.
MESL Microwave Ltd reserves full rights to amend the specification*

Tel: +44 (0)131 333 2000
Fax: +44 (0)131 333 3607
Email: Sales@meslmicrowave.com
Web: www.meslmicrowave.com

Rotary Switch Catalogue

Standard Switch Types



Standard Options

Waveguide Size

The British Standard numbering of waveguide sizes is used.

Switch Configuration

42 - 4 port 2 channel switch, also known as a "transfer" or DPDT switch. This is the most common type of switch and can be configured as 3 port-2 channel (or SPDT) switch by terminating one of the ports.

43 - 4 port 3 channel switch. Used to switch a single port into 3 possible positions.

Flange Series

E - Metric flange, 154 IEC.

N - British Mating Flange - UNC Threads

Other flanges can be accommodated.

Drive

The drive is dictated by the type of switch and cannot be specified by the customer.

T1 - 1 amp motor

T2 - 2 amp motor

T3 - 3 amp motor

FS - Fail Safe switch using solenoid drive

B - Large rotor switch using two solenoids and Geneva mechanism

DS - double solenoid drive

*This publication is issued for outline information purposes only.
MESL Microwave Ltd reserves full rights to amend the specification*

Rotary Switch Catalogue

Position Indication

P - Included in part number if the switch position is available from the switch connector.

Manual Override

O - Included in the part number if the switch has a manual override facility. This option applies to automatic latching switches only.

Internal Circuit Interruption

C - Included in the part number if the switch has an internal circuit interrupt facility which disconnects the supply voltage once the switch has latched into position.

Other Options

Note that this document lists only a small number of our standard designs, we have a range of switches with high microwave performance, and many special designs to suit individual customer requirements. Features can usually be transferred from one switch design to another.

Keylock

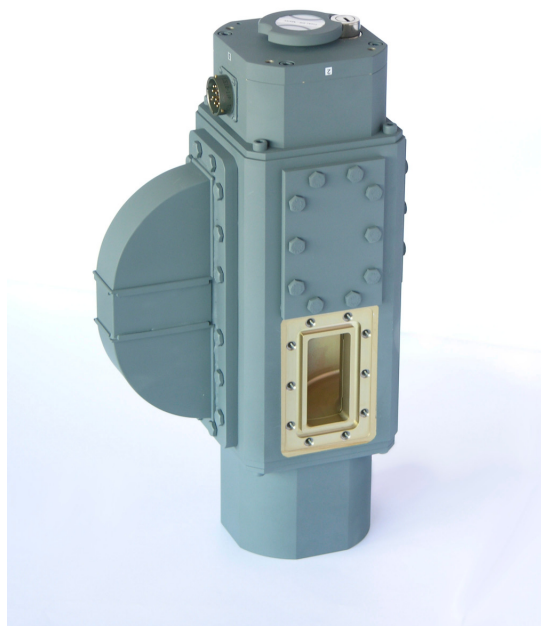
A keylock facility allows a switch to be locked in any position.

Pressurisation

Upon request, pressurisation to between 2 and 5 p.s.i. can easily be provided. Designs are available for pressurisation up to 30 p.s.i.

Diode Protection

Diodes can be incorporated across the supply lines to suppress the back emf's generated by brushless motor designs.



*This publication is issued for outline information purposes only.
MESL Microwave Ltd reserves full rights to amend the specification*